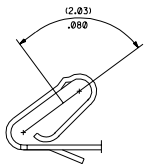
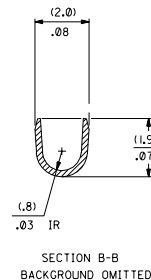
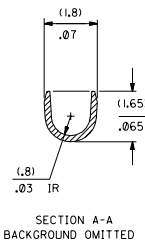
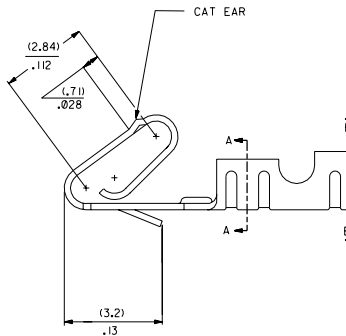
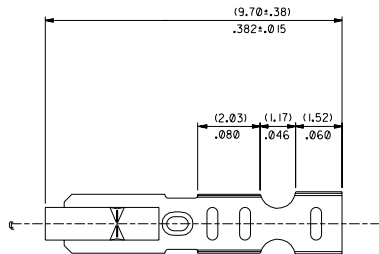
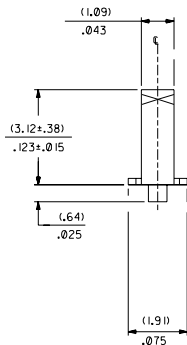
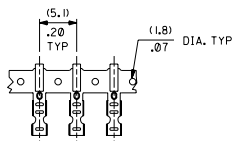


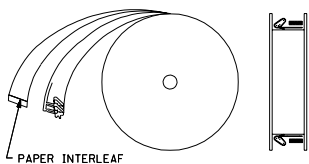
SELECT GOLD LOCATION



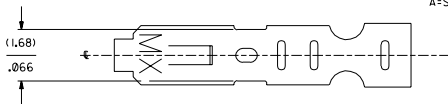
CARRIER VIEW



WINDING DETAIL B



41572-*(***)*
MATERIAL L=LOOSE
A=SEE NOTE 5 FORM
L=LOOSE
BLANK=CHAIN PER DETAIL A



PLATING
PER SDES-88
*(P909) OVERALL HOT TIN DTP: .00254 MICROMETERS MIN
(550) SELECT GOLD: .00038 MICROMETERS MIN.
OVERALL GOLD FLASH: .00005 MICROMETERS MIN.
OVERALL NICKEL UNDERPLATE: .00076 MICROMETERS MIN.
(555) SELECT GOLD: .00038 MICROMETERS MIN.
OVERALL NICKEL UNDERPLATE: .00076 MICROMETERS MIN.

*THE PRIMARY SHIPPING CARTON WILL BE LABELED 'COMPLIANT TO RoHS DIRECTIVE 2002/95/EC AND ELV ANNEX II) OF DIRECTIVE 2000/53/EC.' CARTONS WITHOUT THIS LABEL MAY CONTAIN PRODUCT WITH TIN-LEAD PLATING.

- NOTES:
1. CRIMP IS FOR 22-30 GA WIRE, WITH .062 DIA INSULATION MAX.
2. INSERTION FORCE OF TERMINAL INTO .100 & CONNECTOR IS 2.5 LBS. MAX
3. TERMINALS MUST RETAIN 8 LBS PULL FOR 1 MIN. IN KK .100 & HOUSING.
4. PARTS CONFORM TO PS-10-07
5. MATERIAL: .0080±.0004 THICK PHOS BRONZE ALLOY 510
6. DIMENSIONS GIVEN ACROSS CENTERLINES ARE SYMMETRICAL ABOUT THOSE CENTERLINES WITHIN HALF THE TOTAL TOLERANCE.

PART NO.	ENG NO.
08-65-0804	41572-A(P909)
08-65-0805	41572-A(P909)L
	41572-A(555)
	41572-A(555)L
	41572-A(550)
	41572-A(550)L

MFG	SH	REV.	LTR.	REVISIONS

DIMENSIONS SHOWN METRIC INCH		REV. = 0		REVISE ONLY ON CAD SYSTEM	
UNLESS OTHERWISE SPECIFIED DIMENSIONS ARE IN INCHES		DATE		TITLE	
1 PLATE ± .010		DATE		CRIMP TERMINAL	
2 PLATE ± .015		DATE		22-30 GA WIRE	
3 PLATE ± .038		DATE		SAME AS 6459 EXCEPT CAT EAR	
DATE: MOXIE, APPLICABLE MUST REVIEW WITH DIMENSIONS		MOXIE INC. MOXIE, MO, U.S.A.		MOXIE INC. MOXIE, MO, U.S.A.	
DPP: SAMIEC		PATEL		SEE CHART	
DPP: LENZ		SCALE: 1		SD-41572	